

23  
24

300  
600 MM



DECORATIVE  
GOLDEN / SILVER TILES

# IMPRESSIVE STRENGTH THAT ENHANCE LIFESTYLE.....

we welcome you all to the world of somnath group, where the ingenuity of sharp vision and strong network is the backbone. our strength lies in the vision to produce quality tiles with in- depth technical input and constant vigilance on the consistent quality checks has resulted in a healthy track record of our company.

The production line of the company is in tune with the best in the world market and product falls in the with high standard. Organization R & D of the company has producer and maintained strong quality and design landmarks. A well es ablished dealers network throughout the company and the global presence into markets of all over world. is continually growing.

**HD** HIGH  
DEFINITION  
PRINTING

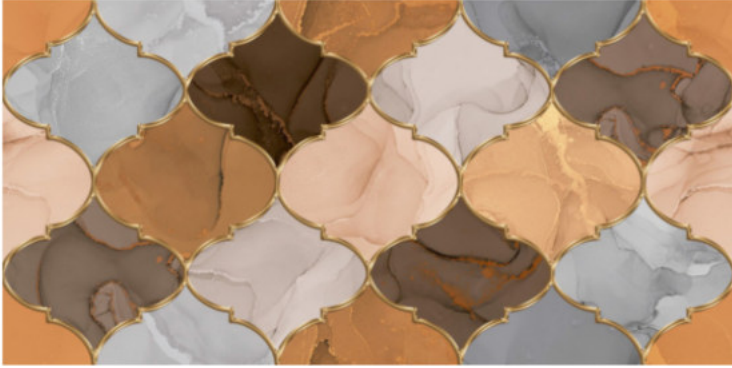
**3D** DIGITAL  
PRINTING  
TECHNOLOGY

## APPLICATION

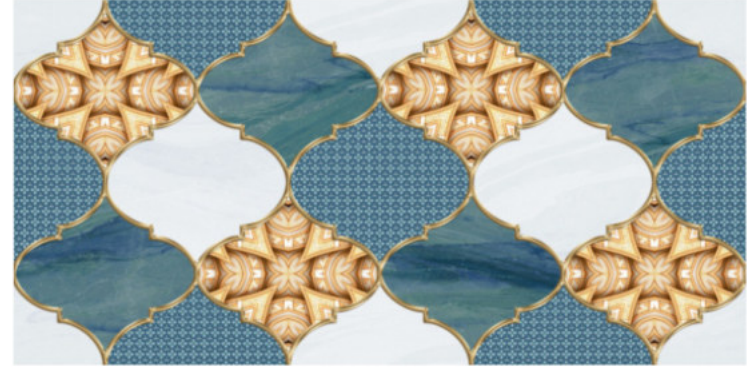


# *GOLDEN & SILVER* HIGHLIGHTER

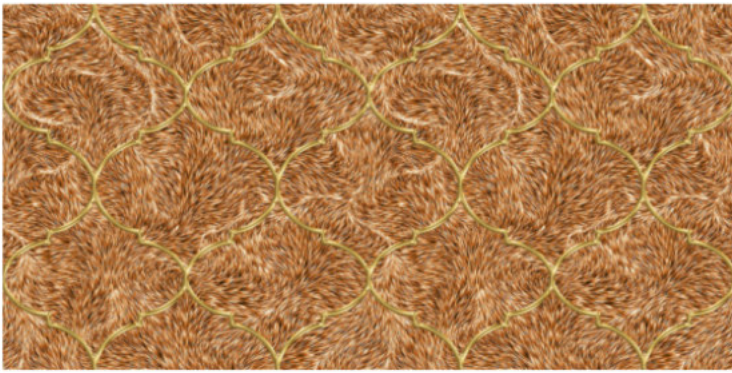
**300**  
**600MM**



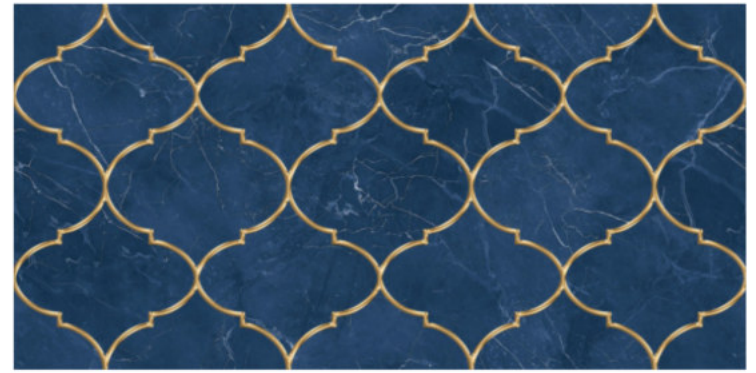
G-901-HL



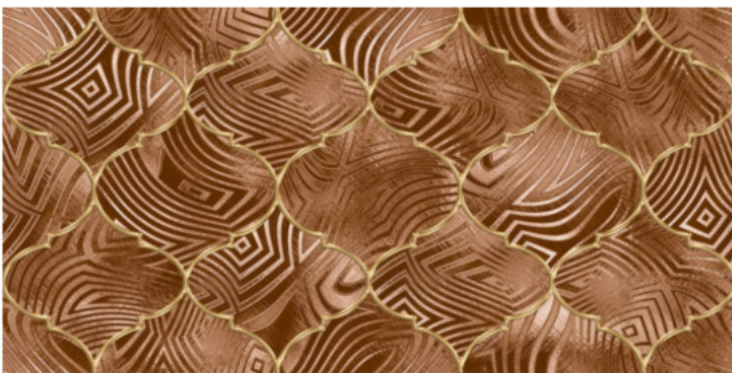
G-901-HL-1



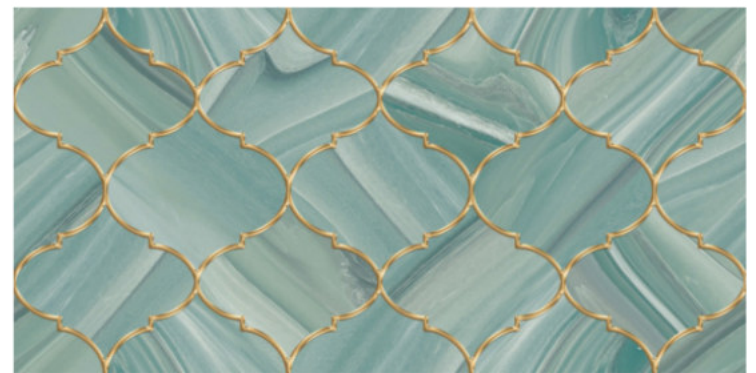
G-901-HL-2



G-901-HL-3



G-901-HL-4



G-901-HL-5

## PACKING DETAILS

SIZE	TILES PER BOX	AREA COVERAGE	WEIGHT	PACKING
300X600 MM	8 PCS	1.44 Sq.Mr	22.5 kg	THERMOCOL





*FEEL THE GOLD*

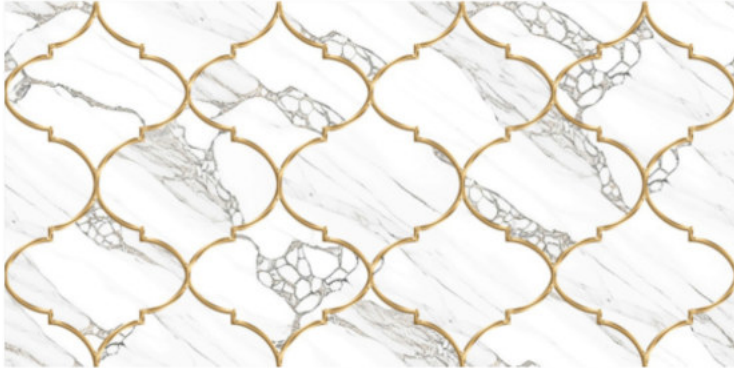


## APPLICATION



# GOLDEN & SILVER HIGHLIGHTER

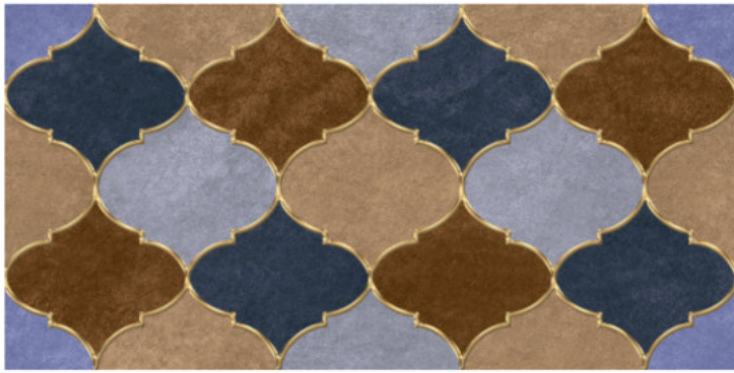
300  
600MM



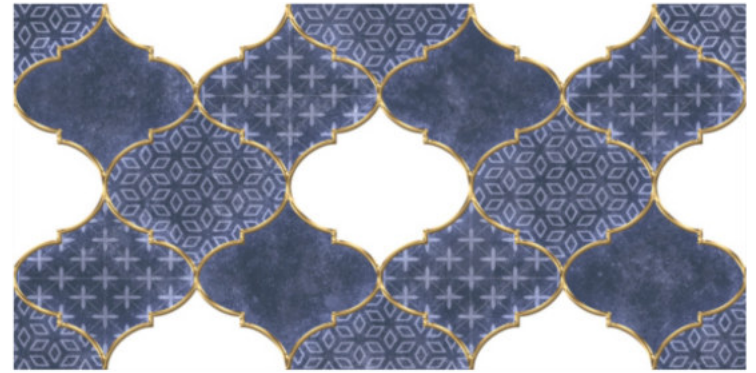
G-901-HL-6



G-901-HL-7



G-901-HL-8



G-901-HL-9



G-902-HL



G-902-HL-1

## PACKING DETAILS

SIZE	TILES PER BOX	AREA COVERAGE	WEIGHT	PACKING
300X600 MM	8 PCS	1.44 Sq.Mr	22.5 kg	THERMOCOL





*FEEL THE GOLD*

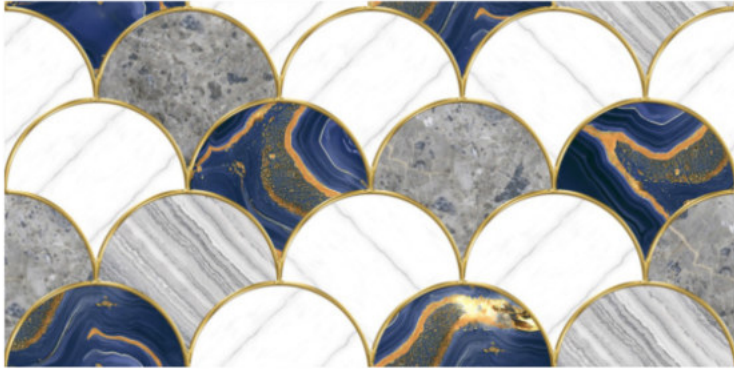


## APPLICATION



## *GOLDEN & SILVER* HIGHLIGHTER

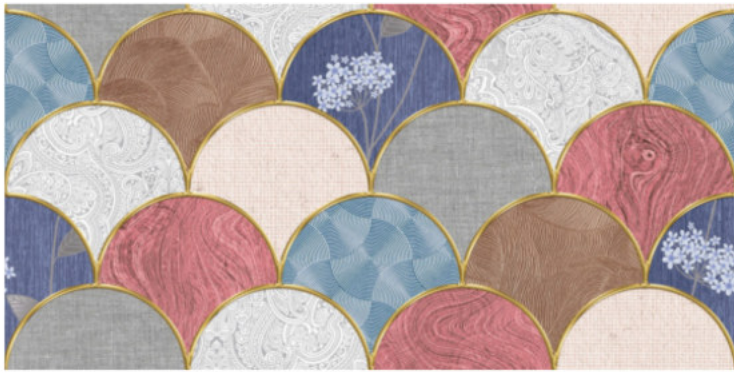
**300**  
**600MM**



G-902-HL-2



G-902-HL-3



G-902-HL-4



G-902-HL-5



G-902-HL-6



G-903-HL

## PACKING DETAILS

SIZE	TILES PER BOX	AREA COVERAGE	WEIGHT	PACKING
300X600 MM	8 PCS	1.44 Sq.Mr	22.5 kg	THERMOCOL





*FEEL THE GOLD*



## APPLICATION



# *GOLDEN & SILVER* HIGHLIGHTER

**300**  
**600MM**



G-903-HL-1



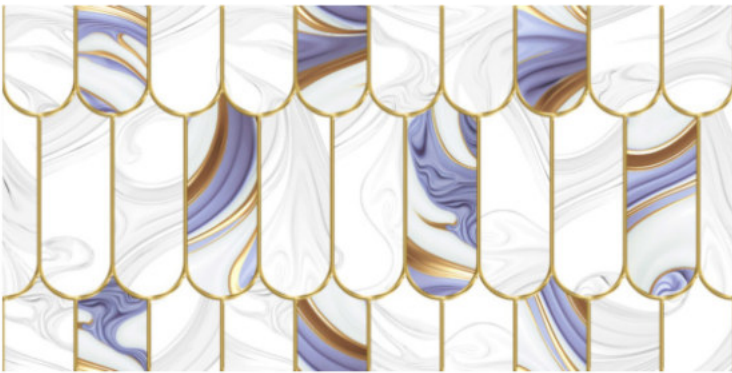
G-903-HL-2



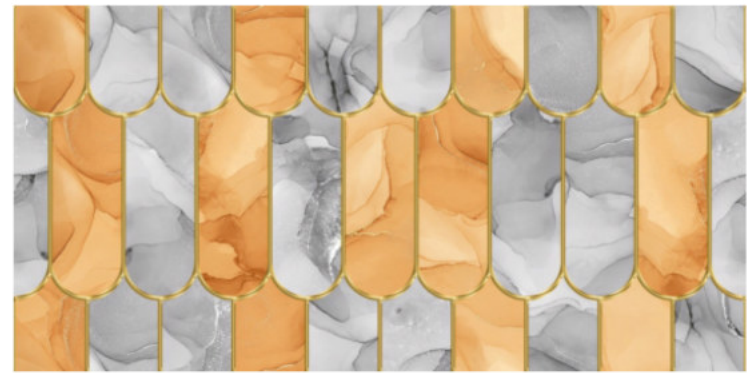
G-903-HL-3



G-903-HL-4



G-903-HL-5



G-903-HL-6

## PACKING DETAILS

SIZE	TILES PER BOX	AREA COVERAGE	WEIGHT	PACKING
300X600 MM	8 PCS	1.44 Sq.Mr	22.5 kg	THERMOCOL





*FEEL THE GOLD*

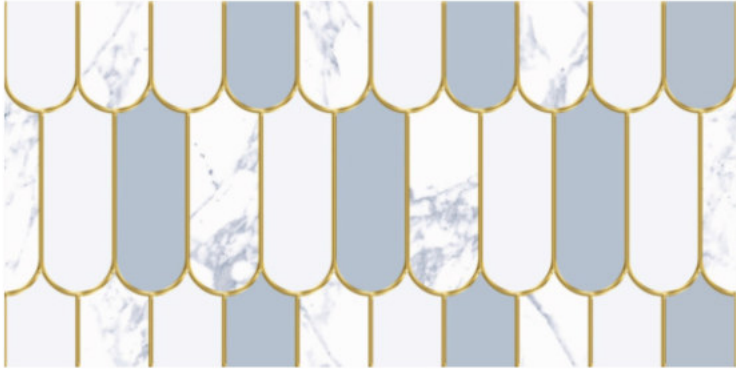


## APPLICATION

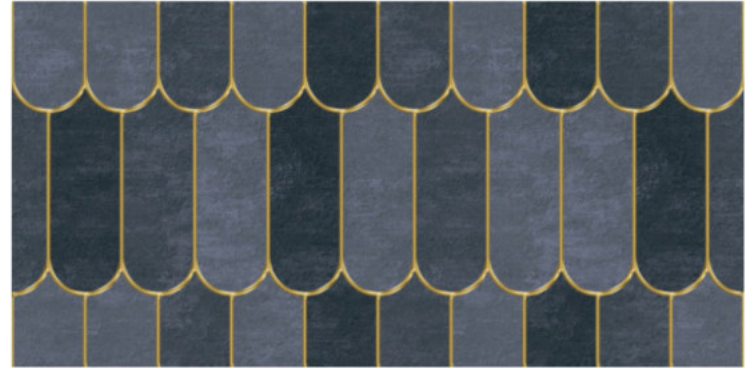


# *GOLDEN & SILVER* HIGHLIGHTER

**300**  
**600MM**



G-903-HL-7



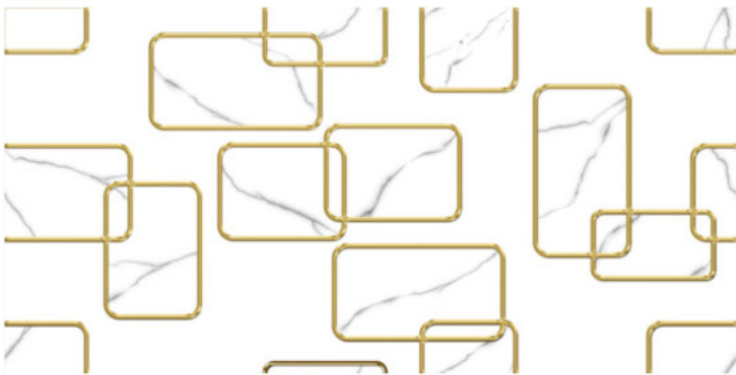
G-903-HL-8



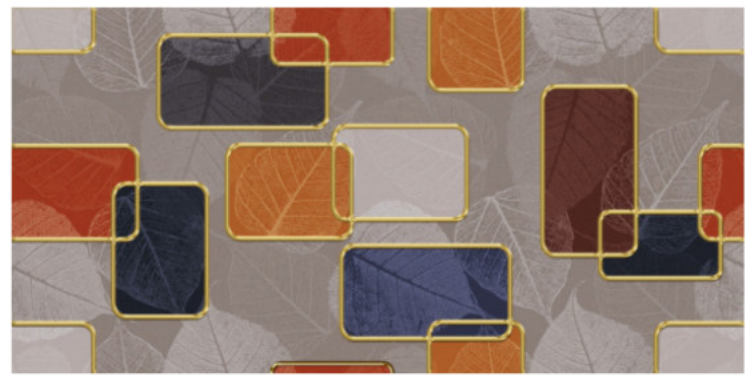
G-904-HL



G-904-HL-1



G-904-HL-2



G-904-HL-3

## PACKING DETAILS

SIZE	TILES PER BOX	AREA COVERAGE	WEIGHT	PACKING
300X600 MM	8 PCS	1.44 Sq.Mr	22.5 kg	THERMOCOL



*FEEL THE GOLD*

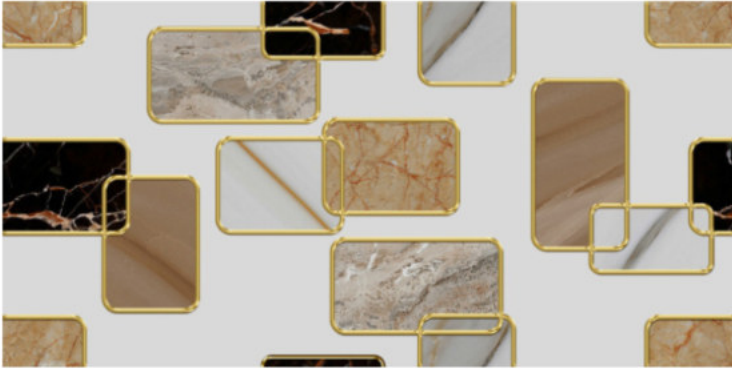


## APPLICATION



# *GOLDEN & SILVER* HIGHLIGHTER

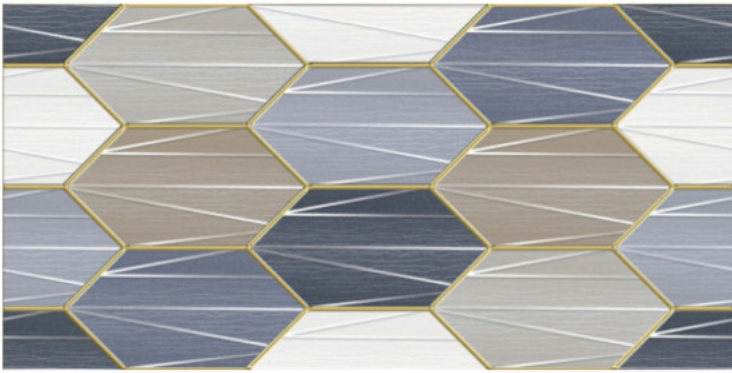
**300**  
**600MM**



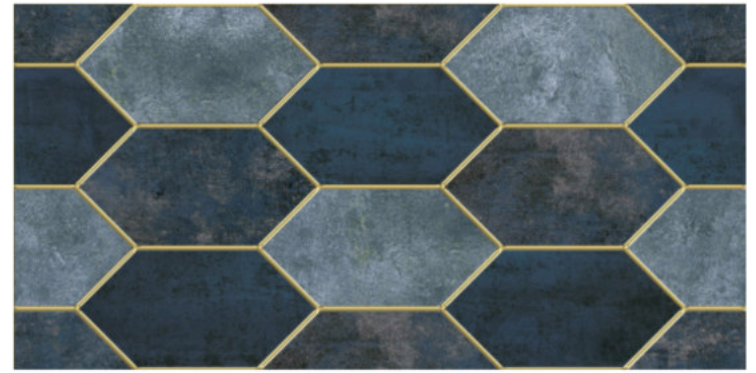
G-904-HL-4



G-904-HL-5



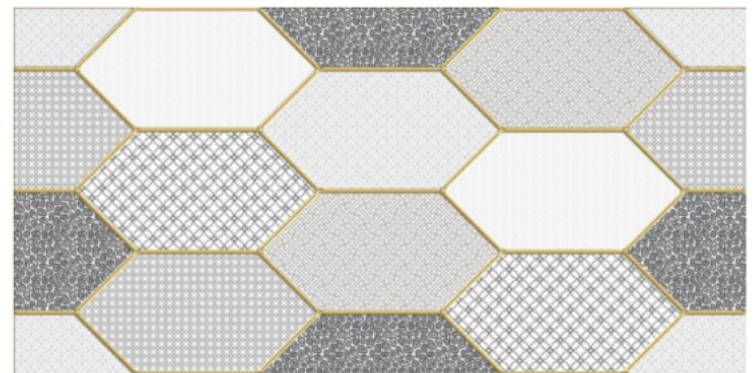
G-905-HL



G-905-HL-1



G-905-HL-2



G-905-HL-3

## PACKING DETAILS

SIZE	TILES PER BOX	AREA COVERAGE	WEIGHT	PACKING
300X600 MM	8 PCS	1.44 Sq.Mr	22.5 kg	THERMOCOL





*FEEL THE GOLD*



## APPLICATION



# *GOLDEN & SILVER* HIGHLIGHTER

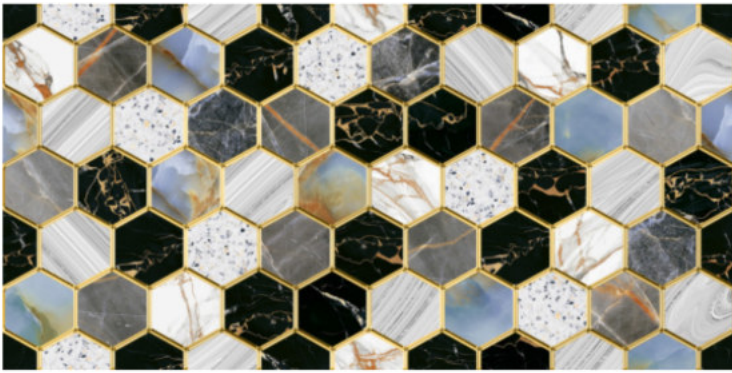
**300**  
**600MM**



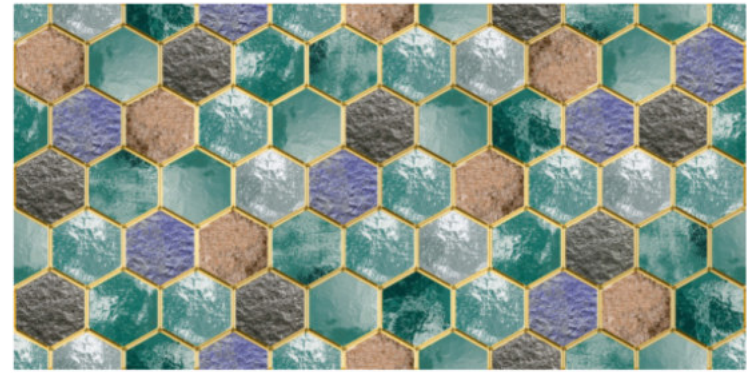
G-905-HL-4



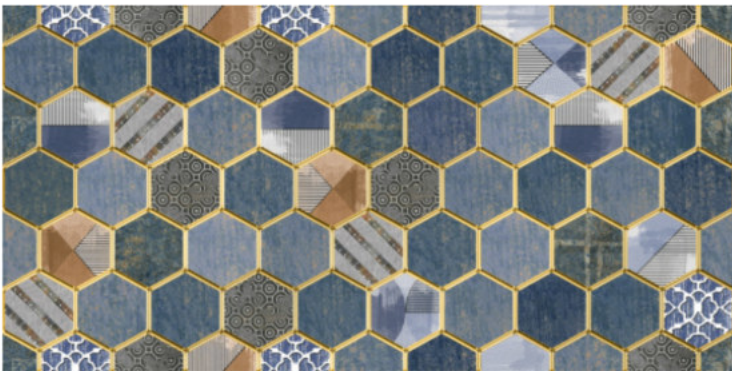
G-905-HL-5



G-906-HL



G-906-HL-1



G-906-HL-2



G-906-HL-3

## PACKING DETAILS

SIZE	TILES PER BOX	AREA COVERAGE	WEIGHT	PACKING
300X600 MM	8 PCS	1.44 Sq.Mr	22.5 kg	THERMOCOL





*FEEL THE GOLD*



## APPLICATION



## *GOLDEN & SILVER* HIGHLIGHTER

**300**  
**600MM**



G-906-HL-4



G-906-HL-5



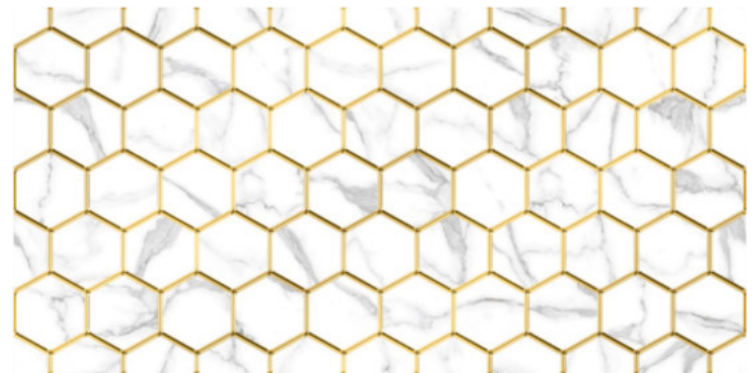
G-906-HL-6



G-906-HL-7



G-906-HL-8



G-906-HL-9

## PACKING DETAILS

SIZE	TILES PER BOX	AREA COVERAGE	WEIGHT	PACKING
300X600 MM	8 PCS	1.44 Sq.Mr	22.5 kg	THERMOCOL





*FEEL THE GOLD*



## APPLICATION

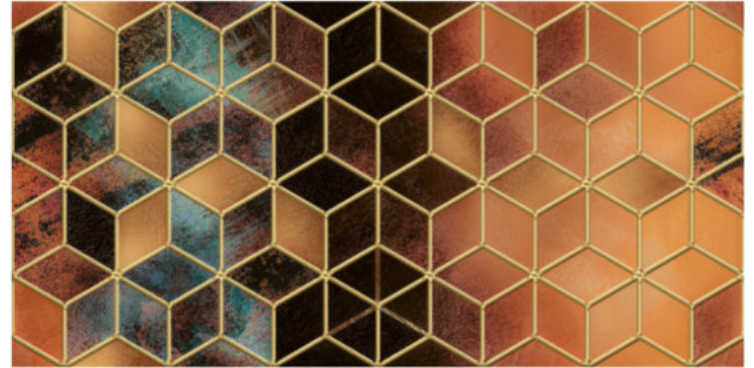


# *GOLDEN & SILVER* HIGHLIGHTER

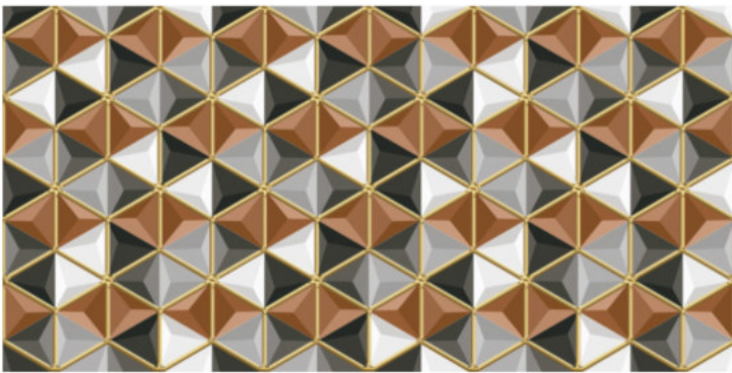
**300**  
**600MM**



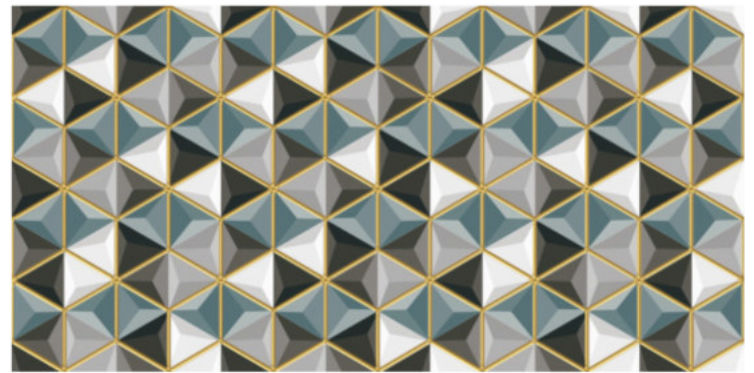
G-907-HL



G-907-HL-1



G-907-HL-2



G-907-HL-3



G-907-HL-4



G-907-HL-5

## PACKING DETAILS

SIZE	TILES PER BOX	AREA COVERAGE	WEIGHT	PACKING
300X600 MM	8 PCS	1.44 Sq.Mr	22.5 kg	THERMOCOL





*FEEL THE GOLD*

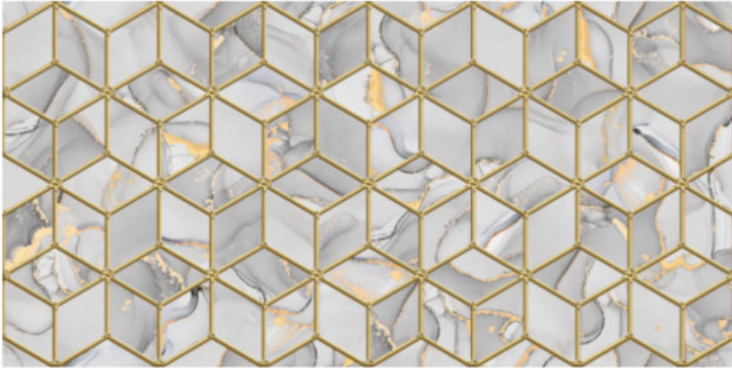


## APPLICATION

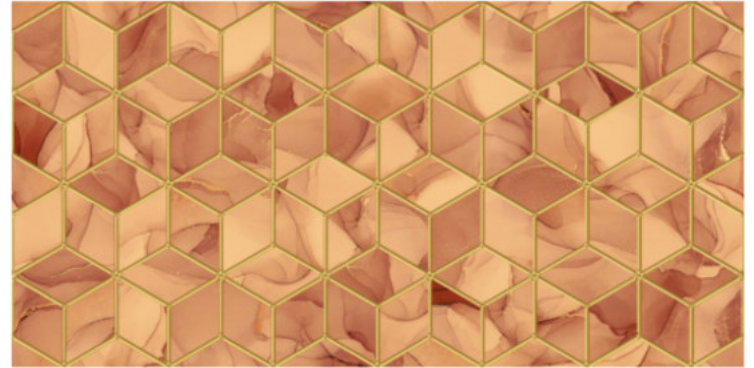


# *GOLDEN & SILVER* HIGHLIGHTER

**300**  
**600MM**



G-907-HL-6



G-907-HL-7



G-907-HL-8



G-908-HL



G-908-HL-1



G-908-HL-2

## PACKING DETAILS

SIZE	TILES PER BOX	AREA COVERAGE	WEIGHT	PACKING
300X600 MM	8 PCS	1.44 Sq.Mr	22.5 kg	THERMOCOL





*FEEL THE GOLD*



## APPLICATION



BEDROOM



BATHROOM



DINING ROOM



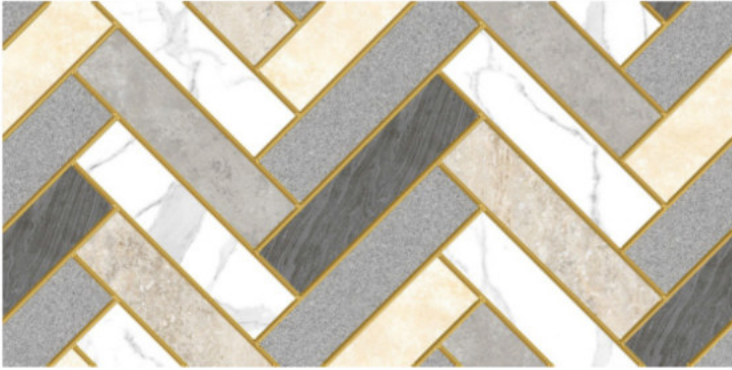
LIVING ROOM



TEMPLE

# *GOLDEN & SILVER* HIGHLIGHTER

**300**  
**600MM**



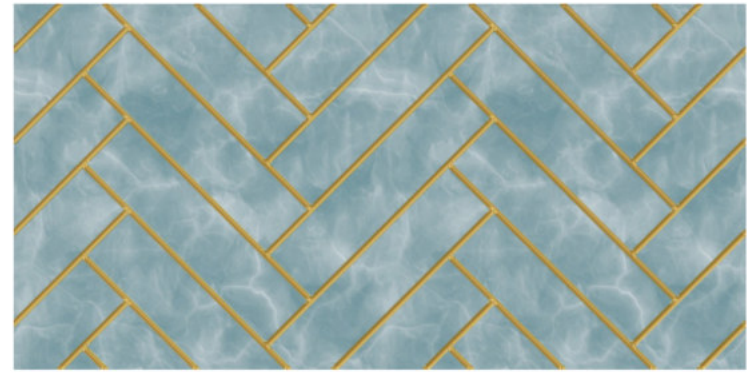
G-908-HL-3



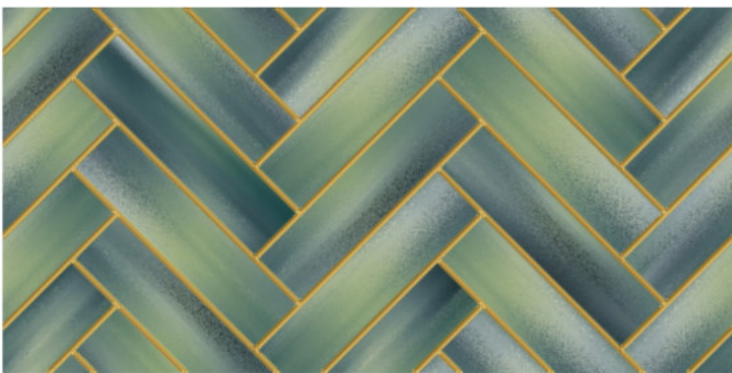
G-908-HL-4



G-908-HL-5



G-908-HL-6



G-908-HL-7



G-908-HL-8

## PACKING DETAILS

SIZE	TILES PER BOX	AREA COVERAGE	WEIGHT	PACKING
300X600 MM	8 PCS	1.44 Sq.Mr	22.5 kg	THERMOCOL





*FEEL THE GOLD*

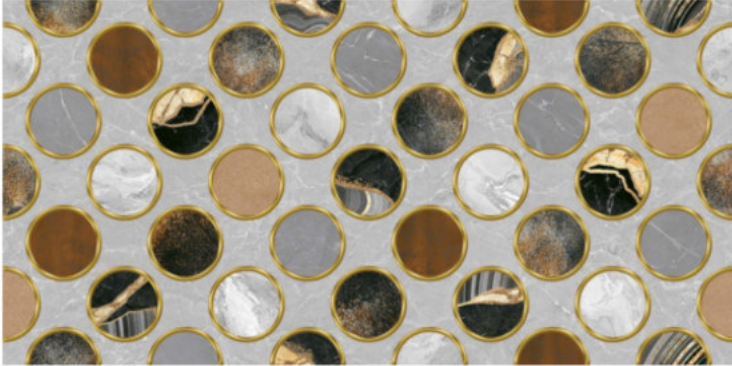


## APPLICATION

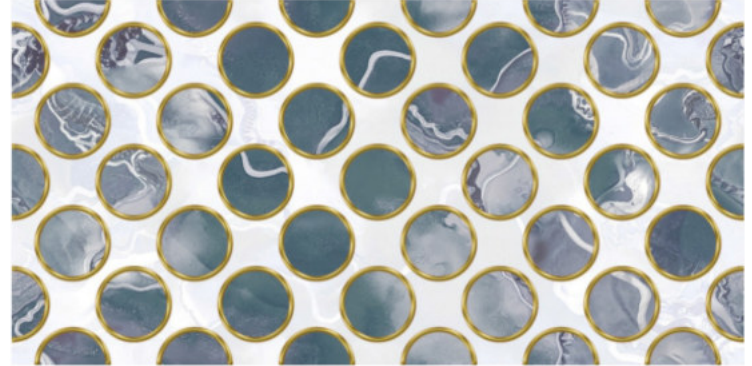


## *GOLDEN & SILVER* HIGHLIGHTER

**300**  
**600MM**



G-909-HL



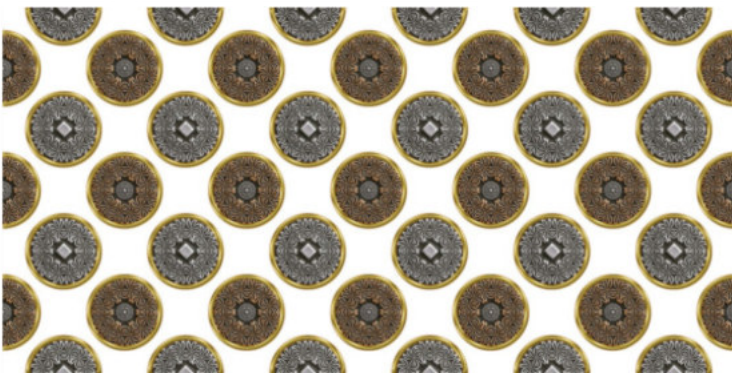
G-909-HL-1



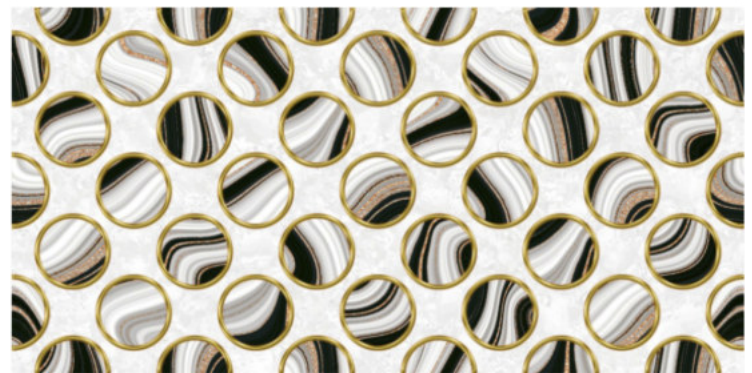
G-909-HL-2



G-909-HL-3



G-909-HL-4



G-909-HL-5

## PACKING DETAILS

SIZE	TILES PER BOX	AREA COVERAGE	WEIGHT	PACKING
300X600 MM	8 PCS	1.44 Sq.Mr	22.5 kg	THERMOCOL





*FEEL THE GOLD*

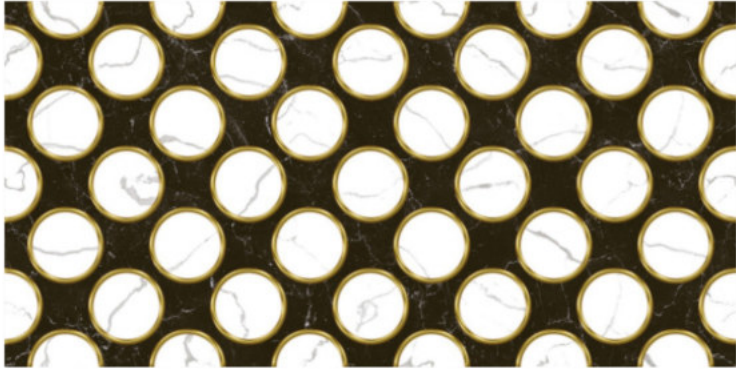


## APPLICATION

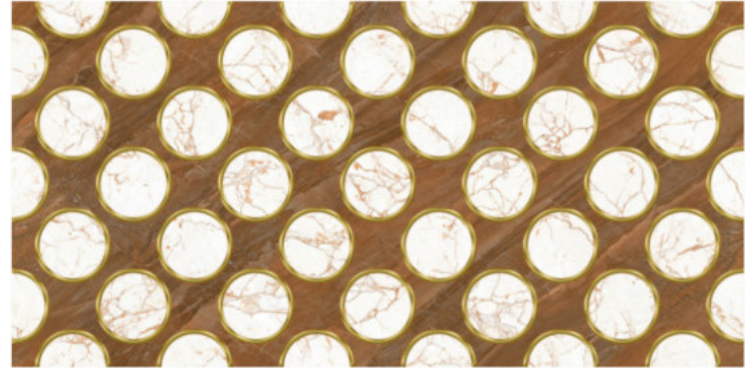


## *GOLDEN & SILVER* HIGHLIGHTER

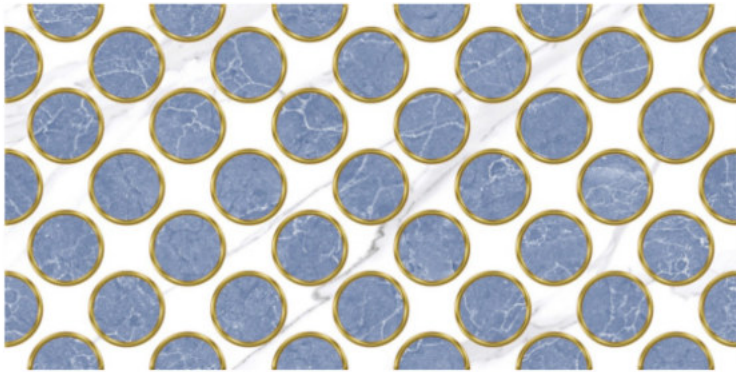
**300**  
**600MM**



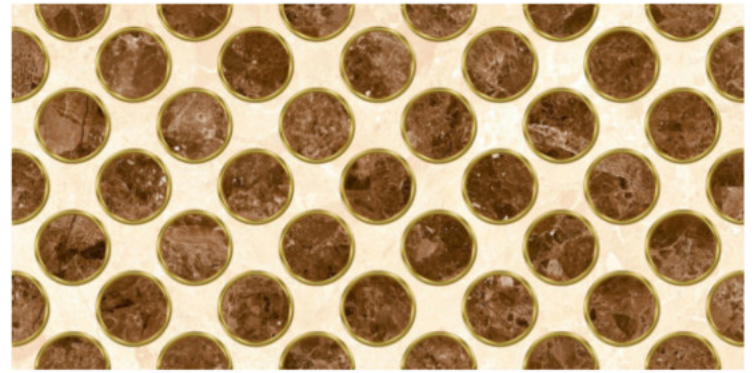
G-909-HL-6



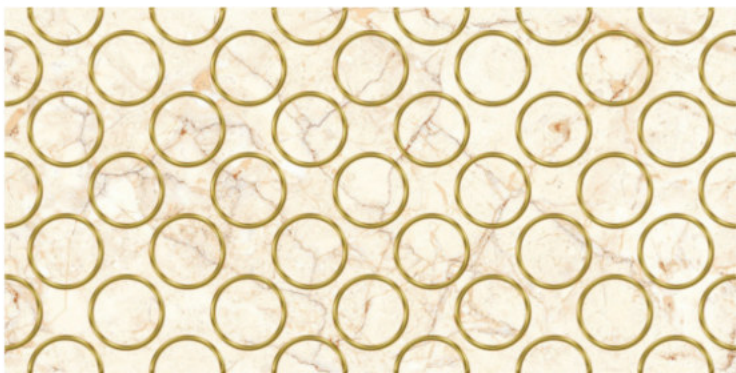
G-909-HL-7



G-909-HL-8



G-909-HL-9



G-909-HL-10



G-909-HL-11

## PACKING DETAILS

SIZE	TILES PER BOX	AREA COVERAGE	WEIGHT	PACKING
300X600 MM	8 PCS	1.44 Sq.Mr	22.5 kg	THERMOCOL





*FEEL THE GOLD*